



ANNUAL FINANCIAL REPORT

Year Ended June 30, 2020

250 South Orange Avenue, Suite 200, Orlando, FL 32801
(407) 481-5672 | www.MetroPlanOrlando.org





metroplan orlando
A REGIONAL TRANSPORTATION PARTNERSHIP

ANNUAL FINANCIAL REPORT OF METROPLAN ORLANDO

Year Ended June 30, 2020

**PREPARED BY DEPARTMENT OF
FINANCE & ADMINISTRATION**

Jason S. Loschiavo, CPA
Director of Finance & Administration

INTRODUCTORY SECTION

Introductory Section

Table of Contents

Board Members

Local Funding Partners

Management Team

Organizational Chart



metroplan orlando

A REGIONAL TRANSPORTATION PARTNERSHIP



metroplan orlando

A REGIONAL TRANSPORTATION PARTNERSHIP

ANNUAL FINANCIAL REPORT Year Ended June 30, 2020

TABLE OF CONTENTS

	Page Number
INTRODUCTORY SECTION	
BOARD MEMBERS.....	i
LOCAL FUNDING PARTNERS.....	ii
MANAGEMENT TEAM.....	iii
ORGANIZATIONAL CHART.....	iv
FINANCIAL SECTION	
INDEPENDENT AUDITOR'S REPORT	1
MANAGEMENT'S DISCUSSION AND ANALYSIS	4
BASIC FINANCIAL STATEMENTS	
Statement of Net Position and Governmental Funds Balance Sheets.....	9
Statement of Activities and Governmental Funds Revenues, Expenditures, and Changes in Fund Balances.....	10
Statement of Revenues, Expenditures, and Changes in Fund Balances – Budget and Actual - General Fund and Special Revenue Fund	11
Notes to the Financial Statements.....	12

ANNUAL FINANCIAL REPORT
Year Ended June 30, 2020

TABLE OF CONTENTS – Continued

	Page Number
COMPLIANCE SECTION	
<i>Additional Elements required by Governmental Auditing Standards, Uniform Guidance and the Rules of the Auditor General.</i>	
INDEPENDENT AUDITOR’S REPORT on Internal Control Over Financial Reporting and on Compliance and Other Matters Based on an Audit of Financial Statements Performed in Accordance with <i>Government Auditing Standards</i>	21
INDEPENDENT AUDITOR’S MANAGEMENT LETTER	23
INDEPENDENT AUDITOR’S REPORT on Compliance for Each Major Federal Program and on Internal Control Over Compliance Required By Uniform Guidance.....	25
SCHEDULE OF EXPENDITURES OF FEDERAL AWARDS.....	27
SCHEDULE OF FINDINGS AND QUESTIONED COSTS	28
OTHER SUPPLEMENTARY INFORMATION	
Schedule of Detailed Revenues, Expenditures and Changes in Fund Balance General Fund.....	29
Schedule of Detailed Project Revenues, Expenditures and Changes in Fund Balance Special Revenue Fund	30

BOARD MEMBERS

As of June 30, 2020

Commissioner Bob Dallari, Chairman

Seminole County

Commissioner Viviana Janer, Vice Chair

Central Florida Regional Transportation Authority (LYNX)/

Central Florida Commuter Rail Commission

Commissioner Mayra Uribe, Secretary/Treasurer

Orange County

Mayor Jose Alvarez

City of Kissimmee

Mayor Dale McDonald

Municipal Advisory Committee

Commissioner Brandon Arrington

Central Florida Expressway Authority

Commissioner Christine Moore

Orange County

Mayor Patricia Bates

City of Altamonte Springs

Mr. Nabil Muhaisen*

Technical Advisory Committee

Commissioner Emily Bonilla

Orange County

Mayor Bryan Nelson

City of Apopka

Mayor Jerry L. Demings

Orange County

Commissioner Tony Ortiz

City of Orlando

Mayor Buddy Dyer

City of Orlando

Mr. Jared Perdue*

District Five Secretary

Florida Department of Transportation

Ms. Sarah Elbadri*

Community Advisory Committee

Commissioner Victoria Siplin

Orange County

Mr. M. Carson Good

Greater Orlando Aviation Authority

Mr. Stephen Smith

Sanford Airport Authority

Commissioner Cheryl Grieb

Osceola County

Commissioner Betsy VanderLey

Orange County

Mr. Doug Jamison*

TSMO Advisory Committee

Mayor Art Woodruff

City of Sanford

Mr. Thomas A. Kapp*

Kissimmee Gateway Airport

Commissioner Jay Zembower

Seminole County

**Non-voting advisors*

LOCAL FUNDING PARTNERS

July 1, 2019 to June 30, 2020

Orange County Government

Osceola County Government

Seminole County Government

City of Altamonte Springs

City of Apopka

City of Kissimmee

City of Orlando

City of Sanford

Central Florida Regional Transportation Authority

Greater Orlando Aviation Authority

Central Florida Expressway Authority

Sanford Airport Authority

Municipal Advisory Committee Members

MANAGEMENT TEAM

As of June 30, 2020

*Gary D. Huttman
Executive Director*

*Nick Lepp
Director of Transportation Planning*

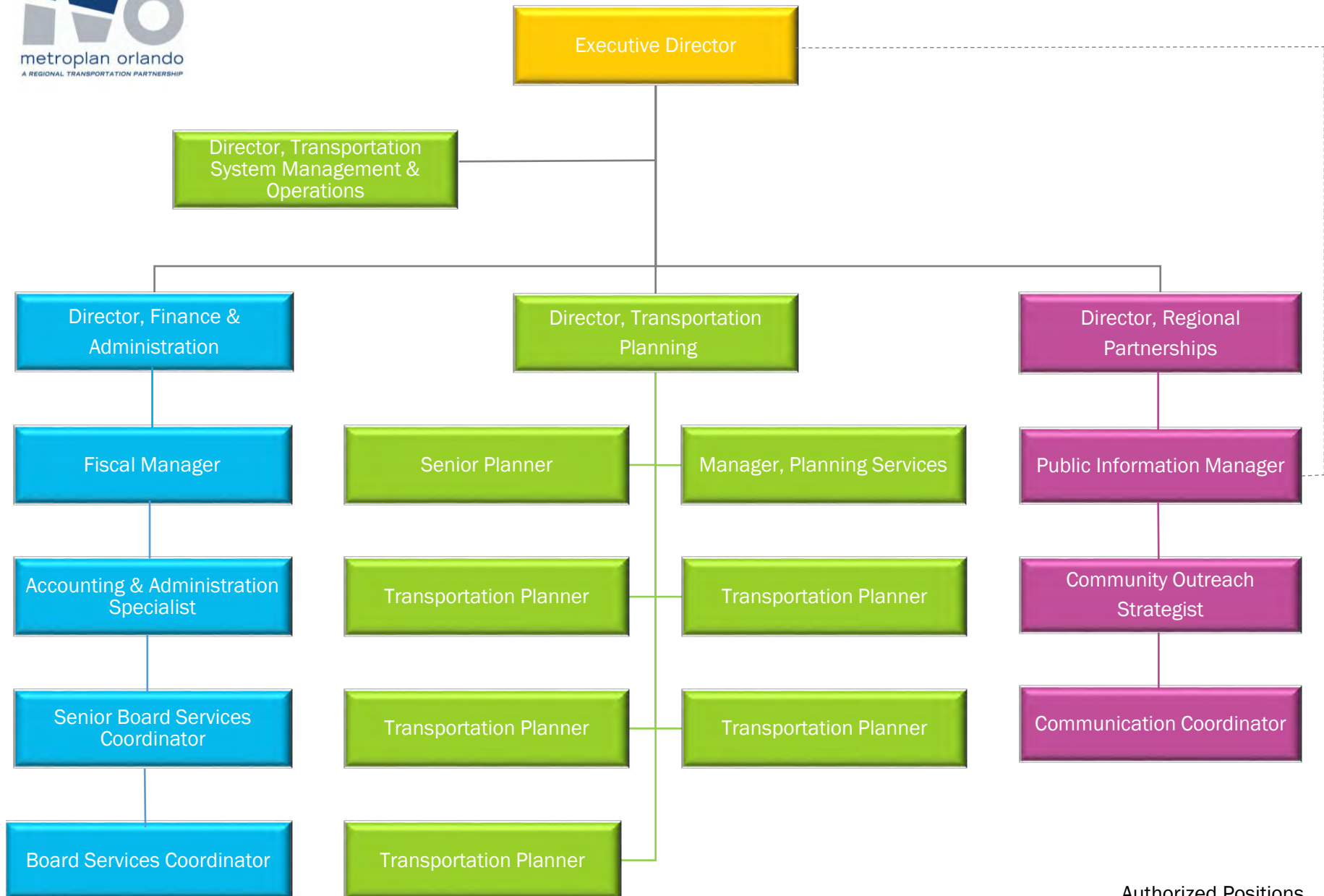
*Eric T. Hill
Director of System Management and Operations*

*Virginia Lewis-Whittington
Director of Regional Partnerships*

*Jason S. Loschiavo, CPA
Director of Finance and Administration*



Organizational Chart - Fiscal Year 2019-2020



Authorized Positions
Full Time: 18

FINANCIAL SECTION

Independent Auditor's Report

**Management's Discussion
and Analysis**

Basic Financial Statements

**Notes to the Financial
Statements**



metroplan orlando

A REGIONAL TRANSPORTATION PARTNERSHIP



INDEPENDENT AUDITOR'S REPORT

To the Board of Directors of
MetroPlan Orlando
Orlando, Florida

Report on the Financial Statements

We have audited the accompanying financial statements of the governmental activities and each major fund of MetroPlan Orlando (the "Organization") as of and for the year ended June 30, 2020, and the related notes to the financial statements, which collectively comprise the Organization's basic financial statements, as listed in the table of contents.

Management's Responsibility for the Financial Statements

Management is responsible for the preparation and fair presentation of these financial statements in accordance with accounting principles generally accepted in the United States of America; this includes the design, implementation, and maintenance of internal control relevant to the preparation and fair presentation of financial statements that are free from material misstatement, whether due to fraud or error.

Auditor's Responsibility

Our responsibility is to express opinions on these financial statements based on our audit. We conducted our audit in accordance with auditing standards generally accepted in the United States of America and the standards applicable to financial audits contained in *Government Auditing Standards* issued by the Comptroller General of the United States. Those standards require that we plan and perform the audit to obtain reasonable assurance about whether the financial statements are free from material misstatement.

An audit involves performing procedures to obtain audit evidence about the amounts and disclosures in the financial statements. The procedures selected depend on the auditor's judgment, including the assessment of the risks of material misstatement of the financial statements, whether due to fraud or error. In making those risk assessments, the auditor considers internal control relevant to the entity's preparation and fair presentation of the financial statements in order to design audit procedures that are appropriate in the circumstances, but not for the purpose of expressing an opinion on the effectiveness of the entity's internal control. Accordingly, we express no such opinion. An audit also includes evaluating the appropriateness of accounting policies used and the reasonableness of significant accounting estimates made by management, as well as evaluating the overall presentation of the financial statements.

We believe that the audit evidence we have obtained is sufficient and appropriate to provide a basis for our audit opinions.

To the Board of Directors of
MetroPlan Orlando

Opinions

In our opinion, the financial statements referred to in the first paragraph present fairly, in all material respects, the respective financial position of the governmental activities and each major fund of the Organization as of June 30, 2020, the respective changes in financial position thereof, and the respective budgetary comparison for the General Fund and the Major Special Revenue Fund for the year then ended in conformity with accounting principles generally accepted in the United States of America.

Other Matters

Required Supplementary Information

Accounting principles generally accepted in the United States of America require that the management's discussion and analysis, as listed in the table of contents, be presented to supplement the basic financial statements. Such information, although not a part of the basic financial statements, is required by the Governmental Accounting Standards Board, who considers it to be an essential part of financial reporting for placing the basic financial statements in an appropriate operational, economic, or historical context. We have applied certain limited procedures to the required supplementary information in accordance with auditing standards generally accepted in the United States of America, which consisted of inquiries of management about the methods of preparing the information and comparing the information for consistency with management's responses to our inquiries, the basic financial statements, and other knowledge we obtained during our audit of the basic financial statements. We do not express an opinion or provide any assurance on the information because the limited procedures do not provide us with sufficient evidence to express an opinion or provide any assurance.

Other Information

Our audit was conducted for the purpose of forming an opinion on the financial statements that collectively comprise the Organization's basic financial statements as a whole. The introductory section and other supplementary information, as listed in the table of contents, are presented for purposes of additional analysis and are not a required part of the financial statements. The accompanying schedule of expenditures of federal awards and state financial assistance is presented for purposes of additional analysis, as required by the audit requirements of Title 2 U.S. *Code of Federal Regulations*, Part 200, *Uniform Administrative Requirements, Cost Principles, and Audit Requirements for Federal Awards* ("Uniform Guidance"), and is also not a required part of the financial statements.

The schedule of expenditures of federal awards is the responsibility of management and was derived from, and relates directly to, the underlying accounting and other records used to prepare the financial statements. The information has been subjected to the auditing procedures applied in the audit of the financial statements and certain additional procedures, including comparing and reconciling such information directly to the underlying accounting and other records used to prepare the financial statements or to the financial statements themselves, and other additional procedures in accordance with auditing standards generally accepted in the United States of America. In our opinion, the information is fairly stated, in all material respects, in relation to the financial statements taken as a whole.

The introductory section and other supplementary information have not been subjected to the auditing procedures applied in the audit of the basic financial statements and, accordingly, we do not express an opinion or provide any assurance on them.

To the Board of Directors of
MetroPlan Orlando

Other Reporting Required by *Government Auditing Standards*

In accordance with *Government Auditing Standards*, we have also issued our report dated October 14, 2020, on our consideration of the Organization's internal control over financial reporting and on our tests of its compliance with certain provisions of laws, regulations, contracts and grant agreements, and other matters. The purpose of that report is to describe the scope of our testing of internal control over financial reporting and compliance and the results of that testing, and not to provide an opinion on the internal control over financial reporting or on compliance. That report is an integral part of an audit performed in accordance with *Government Auditing Standards* in considering the Organization's internal control over financial reporting and compliance.

MSL, P.A.

Certified Public Accountants

Orlando, Florida
October 14, 2020

THIS PAGE INTENTIONALLY LEFT BLANK

MetroPlan Orlando
A Regional Transportation Partnership

MANAGEMENT'S DISCUSSION AND ANALYSIS
Year Ended June 30, 2020

Our discussion and analysis of MetroPlan Orlando's (the "Organization") financial performance provides an overview of the Organization's activities for the fiscal year ended June 30, 2020. Please read it in conjunction with the financial statements and accompanying notes, which begin on page 9.

Overview of the Financial Statements

The organization-wide and fund financial statements are combined for this annual report, as all activities of the Organization are governmental activities. The report consists of the organization-wide and fund financial statements, notes to the financial statements, and other supplementary information. The statements are designed to provide readers with a broad overview of the Organization's finances in a manner similar to a private-sector business.

The Statement of Activities and Governmental Funds Revenues, Expenditures, and Changes in Fund Balances presents information on how the Organization's net position changed during the most recent fiscal year. The Organization uses the economic resources measurement focus and the accrual basis of accounting. All changes in Net Position are reported as soon as the underlying event giving rise to the change occurs, regardless of the timing of related cash flows. Thus, revenues and expenses are reported in this statement for some items that will only result in cash flows in future fiscal periods (e.g., grants receivable and earned but unused personal leave). These governmental activities are primarily supported by member assessments and operating grants.

A fund is a grouping of related accounts that is used to maintain control over resources that have been segregated for specific activities or objectives. The Organization uses fund accounting to ensure and demonstrate compliance with finance-related legal requirements. All of the Organization's special revenue programs are shown combined, as are all federal and state reimbursable operating grants.

The notes to the financial statements provide additional information essential to a full understanding of the basic financial statements. Included in the notes is information on the reconciliation between the government-wide and fund financial statements. The notes to the financial statements begin on page 12 of this report.

Financial Analysis - Government-Wide

The Statement of Net Position and Governmental Funds Balance Sheet presents information on all of the Organization's assets and liabilities, with the difference between the two reported as net position. Over time, increases or decreases in net position may serve as a useful indicator of whether the financial position of the Organization is improving or deteriorating.

Total net position (assets less liabilities) at the end of Fiscal Year 2020 was \$4,618,389, down 1.4%, or \$64,360, from last year as expenditures were greater than revenues. Net position is separated into two distinct categories: net investment in capital assets and unrestricted net position. Net investment in capital assets (furniture, equipment, and software) represents 3.6% of total net position and is not available for future spending. The balance of \$4,452,763 represents unrestricted net position and is available to meet the Organization's obligations to its partners and citizens.

MetroPlan Orlando
A Regional Transportation Partnership

MANAGEMENT'S DISCUSSION AND ANALYSIS
Year Ended June 30, 2020

NET POSITION	FY 2020	FY 2019	Dollar Change	Percent Change
Current and other assets	\$ 5,210,818	\$ 5,132,154	\$ 78,664	1.5%
Capital assets	165,626	229,062	(63,436)	(27.7%)
Total Assets	<u>5,376,444</u>	<u>5,361,216</u>	<u>15,228</u>	<u>0.3%</u>
Accounts payable	384,936	372,396	12,540	3.4%
Accrued liabilities	50,009	40,624	9,385	23.1%
Accrued compensated absences	323,110	265,447	57,663	21.7%
Total Liabilities	<u>758,055</u>	<u>678,467</u>	<u>79,588</u>	<u>11.7%</u>
Net position:				
Net investment in capital assets	165,626	229,062	(63,436)	(27.7%)
Unrestricted	4,452,763	4,453,687	(924)	(0.0%)
Total net position	<u>\$ 4,618,389</u>	<u>\$ 4,682,749</u>	<u>\$ (64,360)</u>	<u>(1.4%)</u>
CHANGES IN NET POSITION	FY 2020	FY 2019	Dollar Change	Percent Change
Revenues				
Operating grants				
Federal	\$ 4,099,137	\$ 3,982,608	\$ 116,529	2.9%
State	102,286	101,881	405	0.4%
State matching	87,696	64,019	23,677	37.0%
Total operating grants	<u>4,289,119</u>	<u>4,148,508</u>	<u>140,611</u>	<u>3.4%</u>
Charges for services	1,207,829	1,178,127	29,702	2.5%
Interest	52,478	79,886	(27,408)	(34.3%)
Miscellaneous revenues	38,628	59,409	(20,781)	(35.0%)
Total revenues	<u>5,588,054</u>	<u>5,465,930</u>	<u>122,124</u>	<u>2.2%</u>
Expenses:				
Programs and operations	5,582,893	5,333,193	249,700	4.7%
Depreciation	69,521	69,362	159	0.2%
Total expenses	<u>5,652,414</u>	<u>5,402,555</u>	<u>249,859</u>	<u>4.6%</u>
Change in Net position	(64,360)	63,375	(127,735)	(201.6%)
Net Position				
Beginning of the year	4,682,749	4,619,374	63,375	1.4%
End of the year	<u>\$ 4,618,389</u>	<u>\$ 4,682,749</u>	<u>\$ (64,360)</u>	<u>(1.4%)</u>

MetroPlan Orlando
A Regional Transportation Partnership

MANAGEMENT'S DISCUSSION AND ANALYSIS
Year Ended June 30, 2020

Financial Analysis - Fund Level

Governmental funds provide information on near-term inflows, outflows, and balances of spendable resources. Such information is useful in assessing the Organization's financing requirements. The General Fund is the chief operating fund of the Organization. Total assets in the General Fund increased 1.5%, or \$72,264, due mostly to a \$62,889 increase in cash and cash equivalents. Due from Other Funds represents reimbursable grants and is up 5.4% due to more grant billings at year end.

Accounts Payable in the Special Revenue Fund was up 1.8%, or \$6,400. Ninety-four percent (\$361,084) of all accounts payable balances were comprised mostly of year-end billings for consultant fees and pass-through dollars and are reimbursable expenses as addressed under Due from Other Funds in the above paragraph.

The Organization is in healthy financial condition. At the end of the current fiscal year, Unassigned Fund Balance of the General Fund was \$4,717,531, while total Fund Balance was \$4,775,873, the difference being a non-spendable amount for prepaid items of \$38,342 and rent deposits of \$20,000. Due to the advanced funding requirement of reimbursable grants and the timing of revenues from local funding partners, it is important that the Organization maintain a minimum amount of General Fund liquidity to maintain operations. The organization does not have an approved fund balance policy, however, management feels that an Unassigned Fund Balance of approximately \$1,843,772 or one-third of Governmental Fund expenditures (\$5,531,315) appears warranted as a minimum. In addition, due to the reliance on federal and state grants as the major funding for the Organization and the potential for delays or cuts to that funding, management strives for higher reserve balances to withstand potential gaps or cuts in funding.

Revenues in the General Fund were down \$18,487, or 1.4%, compared to the prior year. Charges for service increased while interest income and miscellaneous revenues decreased in FY 2020. Interest income was down 34.3% from prior year due to lower interest rates on LGIP investments.

Expenditures and transfers out were \$1,242,196 in the General Fund, which represents an increase of \$87,714, or 7.3%, over last year. The largest change within the General Fund was an increase in salaries and fringe (\$165,589). This was mainly due to 100% staffing levels for most of the Fiscal Year compared to FY 2019 and more salaries programmed to the general fund instead of grants. Other differences included a decrease of \$73,423 paid to consultants out of the general fund due to the Strategic Business Plan that was conducted in FY 2019; and an increase of \$23,677 in transfers out of the general fund due to the FTA grant funds being available sooner in FY 2020 than in FY 2019.

Budgetary Variations

A comparison of the original budget, final amended budget and actual amounts can be found on page 11 of this report. Transportation expenditures in the General Fund were \$293,138 less than budget due to consultant projects not completed in FY 2020. Miscellaneous revenues in the General Fund,

MetroPlan Orlando
A Regional Transportation Partnership

MANAGEMENT'S DISCUSSION AND ANALYSIS
Year Ended June 30, 2020

which includes cash carryforward budget allocations, were \$302,954 less than budgeted for the same reasons.

Special Revenue Fund revenue was \$1,029,650 less than budget, and expenditures were \$1,125,613 less than budget due to several factors including consultant projects extending beyond the fiscal year or not completed. This was exacerbated this year by the effects of COVID-19.

Capital Assets and Long-Term Debt

The Organization's investment in capital assets, net of accumulated depreciation, as of June 30, 2020 and 2019 amounted to \$165,626 and \$229,062 respectively. Assets purchased this year included new computers for staff. Capital assets consist of equipment, furniture, and software used by the organization in its daily operations.

The Organization's long-term debt is comprised solely of employees' accrued compensated absences. As of June 30, 2020, the Organization had \$323,110 in accrued compensated absences, of which \$79,482 is considered to be due within one year. A more detailed explanation of compensated absences can be seen in the notes to the financial statements.

Economic Factors and Next Year's Budget and Rates

The Organization anticipates funding from local assessment revenues to increase slightly in FY 2021. Local funding partners, other than operating agencies and the Municipal Advisory Committee members, contribute \$0.50 per capita. Annual population growth is expected to continue at a rate of between 2% and 3% so local revenue will increase by the same percentage.

In addition to building reserves to meet planning needs, the Organization is actively pursuing other federal and state discretionary grant sources to bring additional funds to the region. Contributions are expected to continue from neighboring MPOs to help support the work of the Central Florida MPO Alliance.

Metropolitan Transportation Plans are anticipated to be a more challenging effort in the future with policy and funding changes that are expected at the federal level, along with FAST Act performance measures and planning for the introduction of autonomous and connected vehicles. The Organization has integrated these factors into its work program but more changes are expected as a new federal transportation bill to replace the FAST Act is in draft form and under review, and as the industry continues to evolve. Additional studies are anticipated for new corridors, freight, rail, expanded bus service, bus rapid transit, paratransit and ridesharing services, trails, complete streets, and technology-related enhancements that will benefit traffic operations and improve safety. In addition, the Organization is engaged in identifying prospective opportunities for generating additional capital and operating funds to meet the region's transportation needs.

MetroPlan Orlando
A Regional Transportation Partnership

MANAGEMENT'S DISCUSSION AND ANALYSIS
Year Ended June 30, 2020

Requests for Information

This financial report is designed to provide a general overview of the Organization's finances for all those with an interest in the Organization's finances. Questions concerning any of the information provided in this report or requests for additional financial information should be addressed to the Director of Finance and Administration, MetroPlan Orlando, 250 South Orange Avenue, Suite 200, Orlando, Florida 32801-3441.

MetroPlan Orlando
A Regional Transportation Partnership

STATEMENT OF NET POSITION AND
GOVERNMENTAL FUNDS BALANCE SHEET

For the Year Ended June 30, 2020

	<u>General Fund</u>	<u>Special Revenue Fund</u>	<u>Total</u>	<u>Adjustments (Note 2)</u>	<u>Statement of Net Position</u>
ASSETS					
Cash and cash equivalents	\$ 4,376,711	\$ -	\$ 4,376,711	\$ -	\$ 4,376,711
Due from other funds	414,681	-	414,681	(414,681)	-
Due from other governments	-	775,765	775,765	-	775,765
Prepaid items	38,342	-	38,342	-	38,342
Deposits	20,000	-	20,000	-	20,000
Capital assets, net	-	-	-	165,626	165,626
Total Assets	<u>\$ 4,849,734</u>	<u>\$ 775,765</u>	<u>\$ 5,625,499</u>	<u>(249,055)</u>	<u>5,376,444</u>
LIABILITIES					
Accounts payable	23,852	361,084	384,936	-	384,936
Due to other funds	-	414,681	414,681	(414,681)	-
Accrued liabilities	50,009	-	50,009	-	50,009
Accrued compensated absences	-	-	-	323,110	323,110
Total Liabilities	<u>73,861</u>	<u>775,765</u>	<u>849,626</u>	<u>(91,571)</u>	<u>758,055</u>
FUND BALANCES/ NET POSITION					
Fund balances:					
Nonspendable:					
Prepaid items	38,342	-	38,342	(38,342)	-
Restricted:					
Deposits	20,000	-	20,000	(20,000)	-
Unassigned	4,717,531	-	4,717,531	(4,717,531)	-
Total Fund Balances	<u>4,775,873</u>	<u>-</u>	<u>4,775,873</u>	<u>(4,775,873)</u>	<u>-</u>
Total Liabilities and Fund Balances	<u>\$ 4,849,734</u>	<u>\$ 775,765</u>	<u>\$ 5,625,499</u>		
Net position:					
Net investment in capital assets				165,626	165,626
Unrestricted				4,452,763	4,452,763
Total Net Position				<u>\$ -</u>	<u>\$ 4,618,389</u>

The accompanying notes are an integral part of the financial statements.

MetroPlan Orlando
A Regional Transportation Partnership

STATEMENT OF ACTIVITIES AND
GOVERNMENTAL FUNDS REVENUES, EXPENDITURES, AND
CHANGES IN FUND BALANCES

For the Year Ended June 30, 2020

	<u>General Fund</u>	<u>Special Revenue Fund</u>	<u>Total</u>	<u>Adjustments (Note 2)</u>	<u>Statement of Activities</u>
REVENUES					
Operating grants					
Federal	\$ -	\$ 4,099,137	\$ 4,099,137	\$ -	\$ 4,099,137
State	-	102,286	102,286	-	102,286
State matching	-	87,696	87,696	-	87,696
Charges for services	1,207,829	-	1,207,829	-	1,207,829
Interest	52,478	-	52,478	-	52,478
Miscellaneous revenues	38,628	-	38,628	-	38,628
Total Revenues	<u>1,298,935</u>	<u>4,289,119</u>	<u>5,588,054</u>	<u>-</u>	<u>5,588,054</u>
EXPENDITURES / EXPENSES					
Transportation:					
Current:					
Programs and operations	1,148,414	4,376,815	5,525,229	57,664	5,582,893
Depreciation	-	-	-	69,521	69,521
Capital outlay	6,086	-	6,086	(6,086)	-
Total Expenditures/Expenses	<u>1,154,500</u>	<u>4,376,815</u>	<u>5,531,315</u>	<u>121,099</u>	<u>5,652,414</u>
Excess (deficiency) of revenues over expenditures	144,435	(87,696)	56,739		
Transfers - internal activities	<u>(87,696)</u>	<u>87,696</u>	<u>-</u>		
Excess of revenues over transfers in (out) and expenditures	56,739	-	56,739	(56,739)	-
Change in net position				(64,360)	(64,360)
FUND BALANCES / NET POSITION					
Beginning of the year	<u>4,719,134</u>	<u>-</u>	<u>4,719,134</u>	<u>(36,385)</u>	<u>4,682,749</u>
End of the year	<u>\$ 4,775,873</u>	<u>\$ -</u>	<u>\$ 4,775,873</u>	<u>\$ (157,484)</u>	<u>\$ 4,618,389</u>

The accompanying notes are an integral part of the financial statements.

MetroPlan Orlando
A Regional Transportation Partnership

STATEMENT OF REVENUES, EXPENDITURES, AND
CHANGES IN FUND BALANCES - BUDGET AND ACTUAL

GENERAL FUND AND SPECIAL REVENUE FUND

For the Year Ended June 30, 2020

	Budgeted Amounts		Actual
	Original	Final	Amounts
GENERAL FUND			
Revenues			
Charges for services	\$ 1,207,829	\$ 1,207,829	\$ 1,207,829
Interest	90,000	90,000	52,478
Miscellaneous revenues	341,582	341,582	38,628
Total Revenues	1,639,411	1,639,411	1,298,935
Expenditures			
Current:			
Transportation	1,451,796	1,441,552	1,148,414
Capital outlay	14,200	14,200	6,086
Total Expenditures	1,465,996	1,455,752	1,154,500
Excess of revenues over expenditures	173,415	183,659	144,435
Other Financing Sources / (Uses)			
Transfers out	(173,415)	(183,659)	(87,696)
Total Other Financing Sources / (Uses)	(173,415)	(183,659)	(87,696)
Net change in fund balance	-	-	56,739
Fund Balance at Beginning of Year	-	-	4,719,134
Fund Balance at End of Year	\$ -	\$ -	\$ 4,775,873
SPECIAL REVENUE FUNDS			
Revenues			
Operating grants	\$ 5,362,905	\$ 5,318,769	\$ 4,289,119
Total Revenues	5,362,905	5,318,769	4,289,119
Expenditures			
Current:			
Transportation	5,536,320	5,502,428	4,376,815
Total Expenditures	5,536,320	5,502,428	4,376,815
Deficiency of revenues over expenditures	(173,415)	(183,659)	(87,696)
Other Financing Sources / (Uses)			
Transfers in	173,415	183,659	87,696
Total Other Financing Sources / (Uses)	173,415	183,659	87,696
Net change in fund balance	-	-	-
Fund Balance at Beginning of Year	-	-	-
Fund Balance at End of Year	\$ -	\$ -	\$ -

The accompanying notes are an integral part of the financial statements.

MetroPlan Orlando
A Regional Transportation Partnership

NOTES TO THE FINANCIAL STATEMENTS
June 30, 2020

NOTE 1 – SUMMARY OF SIGNIFICANT ACCOUNTING POLICIES

A. The Reporting Entity

The Orlando Urban Area Metropolitan Planning Organization d/b/a MetroPlan Orlando/A *Regional Transportation Partnership* (the “Organization”) is a voluntary association of local governmental units organized under the authority of Chapter 339.175 of the Florida Statutes in accordance with the 1962 Federal Aid Highway Act. Its primary purpose is to provide leadership in the initiation and development of transportation plans and programs and the establishment of transportation priorities and strategies in Orange, Seminole, and Osceola Counties. Board membership is apportioned by the Governor of Florida and interlocal agreements among the various governmental entities within the Orlando and Kissimmee Urbanized Areas on the basis of equitable population ratio and prevailing federal and state laws. Membership is comprised of representatives of Orange County (6); Osceola County (1); Seminole County (2); City of Orlando (2); (1) each for the Cities of Altamonte Springs, Apopka, Kissimmee, and Sanford; Greater Orlando Aviation Authority (1); Central Florida Expressway Authority (1); Sanford Airport Authority (1); Central Florida Regional Transportation Authority (LYNX) (1); and the Municipal Advisory Committee (MAC) (1). The MAC is a committee of the Board comprised of smaller cities in the region that do not have a full voting seat on the board. Representatives from the Florida Department of Transportation and Kissimmee Gateway Airport and the Chairpersons of the Technical Advisory Committee, the Transportation System Management & Operations Advisory Committee, and the Community Advisory Committee serve as non-voting advisors.

The accompanying financial statements present the financial position and results of operations of the applicable funds controlled by or dependent upon the Organization. In evaluating the Organization as a reporting entity, management has addressed all potential component units for which the Organization may or may not be financially accountable and, as such, are includable within the Organization’s financial statements. No component units exist which would require inclusion in the Organization’s financial statements.

B. Government-wide and Fund Financial Statements

The government-wide financial statements (i.e., the statement of net position and the statement of activities) report information on all of the activities of the Organization. The effect of interfund activities has been removed from these statements. The Organization only has governmental activities and does not engage in any business-type activities. Direct expenses are those that are clearly identifiable with a specific function or segment. Program revenues include: 1) charges for services, which include member assessments; 2) operating grants; and 3) miscellaneous revenues. General revenues include interest income. Fund financial statements are presented for the Organization’s General and Special Revenue Funds. Both of these funds are considered to be major funds. The Special Revenue Fund is used to account for federal and state funded transportation planning activities.

MetroPlan Orlando
A Regional Transportation Partnership

NOTES TO THE FINANCIAL STATEMENTS - CONTINUED
June 30, 2020

NOTE 1 – SUMMARY OF SIGNIFICANT ACCOUNTING POLICIES – Continued

C. Measurement Focus, Basis of Accounting, and Financial Statement Presentation

The government-wide financial statements are reported using the economic resources measurement focus and the accrual basis of accounting. Revenues are recorded when earned, and expenses are recorded when a liability is incurred, regardless of the timing of related cash flows. Grants and similar items are recognized as revenue as soon as all eligibility requirements imposed by the provider have been met. When both restricted and unrestricted resources are available for use, it is the Organization's policy to use restricted resources first, then unrestricted resources, as they are needed.

Governmental fund financial statements are reported using the current financial resources measurement focus and the modified accrual basis of accounting. Revenues are recognized as soon as they are both measurable and available. Revenues are considered to be available when they are collectible within the current period or soon enough thereafter to pay liabilities of the current period. For this purpose, the Organization considers revenues to be available if they are collected within 90 days of the end of the current period. Expenditures generally are recorded when a liability is incurred, as under accrual accounting.

D. Fund Balances and Spending Order

The Organization classifies governmental fund balances as follows:

- Non-spendable Fund Balance - represents fund balance that is (a) not in a spendable form, such as prepaid items or (b) legally or contractually required to be maintained intact, such as an endowment.
- Restricted Fund Balance - consists of amounts that can be spent only on the specific purpose stipulated by law or by the external providers of those resources.
- Unassigned Fund Balance - represents the residual classification of fund balance and includes all spendable amounts not contained within the other classifications of the General Fund.

When both restricted and unrestricted resources are available for use, it is the Organization's policy to use restricted resources first, and then unrestricted resources, as they are needed for their intended purposes.

E. Budgets and Budgetary Accounting

On or before July 1 of each year, the Organization adopts an annual budget on a generally accepted accounting principles (GAAP) basis sufficient to support the anticipated Unified Planning Work Program (UPWP) for the year. The budget is adopted at the fund level and includes combined revenues from all sources, including federal, state, local and private grants-in-aid, contracts, fees, and such other funding sources legitimately available to the Organization. The level of budget control is at the UPWP task level. Florida Department of Transportation requires all metropolitan planning organizations to

MetroPlan Orlando
A Regional Transportation Partnership

NOTES TO THE FINANCIAL STATEMENTS - CONTINUED
June 30, 2020

NOTE 1 – SUMMARY OF SIGNIFICANT ACCOUNTING POLICIES – Continued

develop a two-year UPWP, consisting of the first year ending on an odd fiscal year date and the second year ending on an even fiscal year date. The second year is considered preliminary for budget purposes as all revenues, especially federal and state grants, are estimated for year two. It is the policy of the organization to revise the second year budget prior to the start of the Fiscal Year.

F. Cash and Cash Equivalents

Cash and cash equivalents include cash on hand and investments in the State Board of Administration Local Government Pooled Investment Accounts and FLCLASS, an Independent Local Government Investment Pool.

G. Prepaids

Prepaids represent payments made to vendors for services that will benefit beyond June 30, 2020.

H. Office Furniture, Fixtures and Equipment

Office furniture, fixtures and equipment purchased in the Governmental Fund Types are recorded as expenditures at the time of purchase. It is the Organization's policy to capitalize property and equipment over \$1,000. Lesser amounts are expensed. Gifts or contributions of capital assets are recorded at fair market value at the time received. Depreciation has been expensed on capital assets as a direct charge using the straight-line method over the estimated useful lives of the various classes of depreciable assets, which range from 3-15 years.

I. Compensated Absences

It is the Organization's policy to grant employees personal leave based upon the number of years of employment with the Organization. Personal leave may be used as time off or, upon resignation or retirement with two weeks' notice, shall be paid up to the maximum the employee would earn in three years. The Executive Director shall be paid up to the maximum earned in four years. Eligible employees may participate in a personal leave sell-back during each calendar year. The Executive Director may sell back up to a maximum of four weeks of accumulated leave while eligible employees may sell back up to two weeks of accumulated leave. Such leave pay shall be made at the employee's current rate of pay. Employees who terminate prior to completion of six months continuous service will not be paid for any accrued personal leave time.

J. Indirect Costs

Certain administrative costs are recorded in the General Fund as indirect costs in the Organization's accounting system and are allocated to the Special Revenue Fund based upon an indirect cost rate appropriate in the circumstances. The rate is based upon direct salary and fringe benefit costs and is approved by the Florida Department of Transportation each fiscal year.

MetroPlan Orlando
A Regional Transportation Partnership

NOTES TO THE FINANCIAL STATEMENTS - CONTINUED
June 30, 2020

NOTE 1 – SUMMARY OF SIGNIFICANT ACCOUNTING POLICIES – Continued

K. Grants

Revenues received or used from grants for governmental funds are recognized as current revenues when they become subject to accrual that is both measurable and available (modified accrual basis).

L. Interfund Transfers

Interfund transfers are between the Organization’s General and Special Revenue Funds and represent the local match, where required, for federal and state grants received or excess revenue or expenditures from performance-based grants. All grants are cost reimbursable grants, except for the Transportation Disadvantaged grant, which is performance-based and is reimbursed as tasks are completed. Eligible project costs are 100% advance-funded by the General Fund.

NOTE 2 – RECONCILIATION OF GOVERNMENT-WIDE AND FUND FINANCIAL STATEMENTS

Adjustments were made to include capital assets (net of accumulated depreciation) and long-term liabilities on the statement of net position. This resulted in a net difference between ending governmental fund balances and total net position of \$157,484. Interfund payables and receivables were also eliminated.

Ending governmental fund balances	\$ 4,775,873
Capital assets, net	165,626
Accrued compensated absences	(323,110)
Total net position	\$ 4,618,389

Adjustments were made to include depreciation expense, eliminate capital outlay expenditures, and record the increase in compensated absences on the statement of activities. This resulted in a net difference between “excess of revenues over expenditures and transfers out” and “change in net position” of \$121,099.

Excess of revenues over expenditures and transfers out	\$ 56,739
Less: Depreciation expense	(69,521)
Increase in compensated absences	(57,664)
Add: Capital outlay expenditures	6,086
Change in net position	\$ (64,360)

MetroPlan Orlando
A Regional Transportation Partnership

NOTES TO THE FINANCIAL STATEMENTS - CONTINUED
June 30, 2020

NOTE 3 – DEPOSITS AND INVESTMENTS

Authorized Investments

The Organization may invest surplus funds in Florida Prime, a Local Government Surplus Trust Funds Investment Pool (State Board of Administration, "SBA"); Independent Local Government Investment Pools (LGIPs); negotiable direct obligations of, or obligations the principal and interest of which are unconditionally guaranteed by the United States Government at the then prevailing market price for such securities with remaining maturities not exceeding seven years; demand deposits and interest-bearing time deposits, money market, or savings accounts in banks organized under the laws of Florida, in national banks organized under laws of the United States, in savings and loan associations which are under state supervision, or in federal savings and loan associations organized under federal law and federal supervision, provided that each such firm shall be doing business and is situated in the tri-county area, and further provided that any such deposits are collateralized, as may be prescribed by Chapter 280, Florida Statutes.

Cash in excess of current requirements is invested in various interest-bearing securities and is classified as investments. Investments are recorded at fair market value and consist entirely of money market funds whose fair market value approximates cost.

Deposits

Deposits consist of interest and noninterest-bearing demand accounts. All deposits with financial institutions were 100% insured by federal depository insurance or by collateral, pursuant to the Public Depository Security Act of the State of Florida.

Investments

The Organization is authorized to invest in investment vehicles, as defined in the written investment policy which was approved by the Board. The policy specifies the authorized investment vehicles which, among others, include the Local Government Surplus Trust Funds Investment Pool (State Board of Administration, "SBA"), LGIPs, negotiable direct obligations of, or obligations the principal and interest of which are unconditionally guaranteed by the United States Government at the then prevailing market price for such securities with remaining maturities not exceeding seven years, for certain money market funds and repurchase agreements. The policy also specifies the portfolio allocation which is intended to meet the Organization's specified goals, in order of priority of safety, liquidity, and yield.

The Florida Prime and FL CLASS Investment accounts are considered SEC 2a-7-like pools, external investment pools that are not registered with the Securities and Exchange Commission as an investment company but, nevertheless, have a policy that they will, and do, operate in a manner consistent with Rule 2a-7 under the Investment Company Act of 1940. Thus, the account balances should also be considered the fair value of the investments. The LGIPs are rated by Standard and Poor's with current ratings of AAAM. The Fund ratings are reviewed weekly. The weighted average days-to-maturity (WAM) of the LGIP, the Florida Prime, at June 30, 2020, was 53 days. The weighted average

MetroPlan Orlando
A Regional Transportation Partnership

NOTES TO THE FINANCIAL STATEMENTS - CONTINUED
 June 30, 2020

NOTE 3 – DEPOSITS AND INVESTMENTS – Continued

days-to-maturity (WAM) of the LGIP, FLCLASS, at June 30, 2020, was 50 days. Currently, all of the LGIP balances for the Organization are eligible for withdrawal.

As of June 30, 2020, the Organization has the following balances invested:

	Fair Value
Bank Demand Deposits	\$ 2,082,769
Petty Cash	125
FL CLASS Investment Account	1,174,434
State Board of Administration:	
LGIP-Prime	1,119,383
Total Deposits and Investments	<u>\$ 4,376,711</u>

NOTE 4 – CAPITAL ASSETS

The following is a summary of changes in capital assets during the fiscal year:

	Balance			Balance
	July 1, 2019	Increases	Decreases	June 30, 2020
Capital Assets being depreciated:				
Office furniture, fixtures and equipment	\$ 691,047	\$ 6,086	\$ (93,658)	\$ 603,475
Less: Accumulated depreciation	(461,986)	(69,521)	93,658	(437,849)
Total Capital Assets, net	<u>\$ 229,061</u>	<u>\$ (63,435)</u>	<u>\$ -</u>	<u>\$ 165,626</u>

NOTE 5 – LONG-TERM DEBT

During the year ended June 30, 2020, the following changes occurred in long-term liabilities:

	Balance			Balance	Due Within
	July 1, 2019	Increases	Decreases	June 30, 2020	One Year
Accrued compensated absences	<u>\$ 265,447</u>	<u>\$ 242,204</u>	<u>\$ (184,541)</u>	<u>\$ 323,110</u>	<u>\$ 79,482</u>

MetroPlan Orlando
A Regional Transportation Partnership

NOTES TO THE FINANCIAL STATEMENTS - CONTINUED
June 30, 2020

NOTE 6 – LEASE OBLIGATIONS

The Organization leases office facilities and other equipment under non-cancelable operating leases.

- A. On June 8, 2015, the Organization entered into a ten-year lease agreement for new office space with ten months of free rent outside the lease term. Monthly rates for the new lease period range from \$20,000 in 2016 to \$27,000 in 2026, with one free month in each of the first ten years of the lease.
- B. The Organization entered into a new copier lease in June, 2020, extending from June, 2020, through June, 2025. Under the terms of the lease, monthly rentals are \$745.
- C. In July, 2017, a 48-month lease agreement was entered into for a new mailing system, which expires in September, 2021. The quarterly lease payment is \$290.

The future minimum lease payments as of June 30, 2020, are as follows:

Year Ending June 30	Building	Copiers	Mail Machine	Total
2021	250,967	8,940	1,160	261,067
2022	258,475	8,940	-	267,415
2023	266,208	8,940	-	275,148
2024	274,217	8,940	-	283,157
2025	282,458	8,940	-	291,398
2026	317,800	-	-	317,800
2027	107,500	-	-	107,500
	<u>\$ 1,757,625</u>	<u>\$ 44,700</u>	<u>\$ 1,160</u>	<u>\$ 1,803,485</u>

Building rent expense for the year ended June 30, 2020, was \$248,240.20.

NOTE 7 – EMPLOYEE BENEFIT PLAN

The Organization maintains the MetroPlan Orlando Money Purchase Pension Plan and Trust, a defined contribution pension plan. This is a tax-qualified plan pursuant to Section 401(a) of the Internal Revenue Code. This plan was established as of January 1, 1997, by the Board of the Organization. All full-time employees and regular part-time employees working 30 hours a week or more are eligible to participate in the plan upon employment. Participants become vested after one year of continuous employment.

MetroPlan Orlando
A Regional Transportation Partnership

NOTES TO THE FINANCIAL STATEMENTS - CONTINUED
June 30, 2020

NOTE 7 – EMPLOYEE BENEFIT PLAN – Continued

The Organization is required to contribute 10% of the salaries of eligible employees to the plan. Salaries include W-2 earnings plus any contributions made pursuant to a salary reduction agreement, which was not included in the gross income of the employer under Section 457 of the Internal Revenue Code. Employees may not contribute to the plan. For the year ended June 30, 2020, MetroPlan Orlando recognized employer contributions of \$155,130 in connection with the plan, \$4,159 of which was accrued at June 30, 2020, and paid subsequent to that time.

An outside party, the International City Management Association Retirement Corporation (ICMA) administers the plan with all funds invested with the ICMA Retirement Trust. Investments are self-directed by the employee. The normal retirement age has been designated by the employer as age 55. The plan permits withdrawals for retirement, termination, and disability. The plan does not allow participants to borrow against their accounts.

NOTE 8 – RISK MANAGEMENT

The Organization is exposed to various risks of loss related to torts; theft of, damage to, and destruction of assets; errors and omissions; injuries to employees; and natural disasters. The Organization purchases commercial insurance for all types of claims with nominal deductible amounts. The following is a summary of the Organization’s significant insurance coverage and limitations:

Coverage	Limitations
General/Professional Liability (Includes errors & omissions; and employee benefits program administration)	\$200,000 – Each person \$300,000 – Each occurrence \$500,000 – Combined single limit, per occurrence
Information Security & Privacy Liability	\$250,000 - Each claim
Fiduciary Liability (Pension Plan)	\$2,000,000 – Aggregate all claims
Fiduciary Liability (Deferred Compensation Plan)	\$2,000,000 – Aggregate all claims
Auto Liability	\$200,000 – Each person \$300,000 – Each occurrence \$500,000 – Combined single limit, per occurrence
Terrorism Physical Loss/Damage	\$5,000,000 – Aggregate per year
Property Damage (Includes personal property; inland marine; computer equipment and software)	\$628,322 – Personal property No Limit – Inland marine
Executive Travel Accident	\$250,000 – Per occurrence

MetroPlan Orlando
A Regional Transportation Partnership

NOTES TO THE FINANCIAL STATEMENTS - CONTINUED
June 30, 2020

NOTE 8 – RISK MANAGEMENT – Continued

Worker Compensation – Statutory	\$1,000,000 – Each accident
	\$1,000,000 – Each disease (policy limit)
	\$1,000,000 – Aggregate by disease

There have been no significant reductions in insurance coverage during Fiscal Year 2020. There have been no insurance claims in the past three years.

On December 31, 2019, the first cases of what would become the COVID-19 virus were reported in China. Since then the virus has spread across the globe and has been declared a global pandemic by the World Health Organization. The Organization continues to monitor the situation; however, the impact to the Organization, if any, cannot be determined at this time.

NOTE 9 – COMMITMENTS AND CONTINGENCIES

Intergovernmental Grants

Amounts received or receivable from grantors are subject to audit and adjustment by grantor agencies, principally federal and state governments. Any disallowed claims, including amounts already collected, may constitute a liability of the General Fund. The amount, if any, of expenditures, which may be disallowed by the grantor, cannot be determined at this time, although the Organization expects such amounts to be immaterial.

THIS PAGE INTENTIONALLY LEFT BLANK

COMPLIANCE SECTION

**Compliance and Internal Control
Over Financial Reporting**

Management Letter

**Compliance with Requirements
Applicable to Each Major Program**

Expenditures of Federal Awards

Findings and Questioned Costs



metroplan orlando
A REGIONAL TRANSPORTATION PARTNERSHIP



**INDEPENDENT AUDITOR’S REPORT ON INTERNAL CONTROL OVER
FINANCIAL REPORTING AND ON COMPLIANCE AND OTHER MATTERS
BASED ON AN AUDIT OF FINANCIAL STATEMENTS PERFORMED
IN ACCORDANCE WITH *GOVERNMENT AUDITING STANDARDS***

To the Board of Directors of
MetroPlan Orlando
Orlando, Florida

We have audited, in accordance with the auditing standards generally accepted in the United States of America and the standards applicable to financial audits contained in *Government Auditing Standards* issued by the Comptroller General of the United States, the financial statements of the governmental activities and each major fund of MetroPlan Orlando (the “Organization”) as of and for the year ended June 30, 2020, and the related notes to the financial statements, which collectively comprise the Organization’s basic financial statements, and have issued our report thereon dated October 14, 2020.

Internal Control over Financial Reporting

In planning and performing our audit, we considered the Organization’s internal control over financial reporting (internal control) to determine the audit procedures that are appropriate in the circumstances for the purpose of expressing our opinions on the financial statements, but not for the purpose of expressing an opinion on the effectiveness of the Organization’s internal control. Accordingly, we do not express an opinion on the effectiveness of the Organization’s internal control.

A *deficiency in internal control* exists when the design or operation of a control does not allow management or employees, in the normal course of performing their assigned functions, to prevent, or detect and correct, misstatements on a timely basis. A *material weakness* is a deficiency, or combination of deficiencies, in internal control, such that there is a reasonable possibility that a material misstatement of the entity’s financial statements will not be prevented, or detected and corrected, on a timely basis. A *significant deficiency* is a deficiency, or a combination of deficiencies, in internal control that is less severe than a material weakness, yet important enough to merit attention by those charged with governance.

Our consideration of internal control was for the limited purpose described in the first paragraph of this section and was not designed to identify all deficiencies in internal control over financial reporting that might be material weaknesses or significant deficiencies. Given these limitations, during our audit we did not identify any deficiencies in internal control that we consider to be material weaknesses. However, material weaknesses may exist that have not been identified.

To the Board of Directors of
MetroPlan Orlando

Compliance and Other Matters

As part of obtaining reasonable assurance about whether the Organization's financial statements are free from material misstatement, we performed tests of its compliance with certain provisions of laws, regulations, contracts and grant agreements, noncompliance with which could have a direct and material effect on the determination of financial statement amounts. However, providing an opinion on compliance with those provisions was not an objective of our audit and, accordingly, we do not express such an opinion. The results of our tests disclosed no instances of noncompliance or other matters that are required to be reported under *Government Auditing Standards*.

Purpose of this Report

The purpose of this report is solely to describe the scope of our testing of internal control and compliance and the results of that testing, and not to provide an opinion on the effectiveness of the entity's internal control or on compliance. This report is an integral part of an audit performed in accordance with *Government Auditing Standards* in considering the entity's internal control and compliance. Accordingly, this communication is not suitable for any other purpose.

MSL, P.A.

Certified Public Accountants

Orlando, Florida
October 14, 2020



INDEPENDENT AUDITOR'S MANAGEMENT LETTER

To the Board of Directors of
MetroPlan Orlando
Orlando, Florida

Report on the Financial Statements

We have audited the financial statements of MetroPlan Orlando (the "Organization") as of and for the fiscal year ended June 30, 2020, and have issued our report thereon dated October 14, 2020.

Auditor's Responsibility

We conducted our audit in accordance with auditing standards generally accepted in the United States of America; the standards applicable to financial audits contained in *Government Auditing Standards* issued by the Comptroller General of the United States; the audit requirements of Title 2 U.S. *Code of Federal Regulations*, Part 200, *Uniform Administrative Requirements, Cost Principles, and Audit Requirements for Federal Awards* ("Uniform Guidance"); and Chapter 10.550, *Rules of the Auditor General*.

Other Reporting Requirements

We have issued our Independent Auditor's Report on Internal Control over Financial Reporting and on Compliance and Other Matters Based on an Audit of Financial Statements Performed in Accordance with *Government Auditing Standards*; Independent Auditor's Report on Compliance for Each Major Federal Program and on Internal Control over Compliance Required by the Uniform Guidance; and Schedule of Findings and Questioned Costs. Disclosures in those reports and schedule, which are dated October 14, 2020, should be considered in conjunction with this management letter.

Prior Audit Findings

Section 10.554(1)(i)1., *Rules of the Auditor General*, requires that we determine whether or not corrective actions have been taken to address findings and recommendations made in the preceding annual financial audit report. There were no findings and recommendations in the preceding annual financial audit report.

Financial Management

Section 10.544(1)(i)2., *Rules of the Auditor General*, requires that we communicate any recommendations to improve financial management. In connection with our audit, we did not have such recommendations.

To the Board of Directors of
MetroPlan Orlando

Purpose of this Letter

Our management letter is intended solely for the information and use of the Legislative Auditing Committee, members of the Florida Senate and the Florida House of Representatives, the Florida Auditor General, federal and other granting agencies, and applicable management, and is not intended to be, and should not be, used by anyone other than these specified parties.

MSL, P.A.

Certified Public Accountants

Orlando, Florida
October 14, 2020



**INDEPENDENT AUDITOR’S REPORT ON COMPLIANCE FOR
EACH MAJOR FEDERAL PROGRAM AND ON INTERNAL CONTROL
OVER COMPLIANCE REQUIRED BY THE UNIFORM GUIDANCE**

To the Board of Directors of
MetroPlan Orlando
Orlando, Florida

Report on Compliance for Each Major Federal Program

We have audited the compliance of MetroPlan Orlando (the “Organization”) with the types of compliance requirements described in the U.S. Office of Management and Budget *OMB Compliance Supplement* that could have a direct and material effect on its major federal program for the year ended June 30, 2020. The Organization’s major federal program is identified in the summary of auditor’s results section of the accompanying Schedule of Findings and Questioned Costs.

Management’s Responsibility

Management is responsible for compliance with the requirements of laws, regulations, contracts, and grants applicable to its federal programs.

Auditor’s Responsibility

Our responsibility is to express an opinion on compliance for the Organization’s major federal program based on our audit of the types of compliance requirements referred to above. We conducted our audit of compliance in accordance with auditing standards generally accepted in the United States of America; the standards applicable to financial audits contained in *Government Auditing Standards* issued by the Comptroller General of the United States; and the audit requirements of Title 2 U.S. *Code of Federal Regulations, Part 200, Uniform Administrative Requirements, Cost Principles, and Audit Requirements for Federal Awards* (“Uniform Guidance”). Those standards and the Uniform Guidance require that we plan and perform the audit to obtain reasonable assurance about whether noncompliance with the types of compliance requirements referred to above that could have a direct and material effect on a major federal program occurred. An audit includes examining, on a test basis, evidence about the Organization’s compliance with those requirements and performing such other procedures as we considered necessary in the circumstances.

We believe that our audit provides a reasonable basis for our opinion on compliance for the major federal program. However, our audit does not provide a legal determination of the Organization’s compliance.

Opinion on the Major Federal Program

In our opinion, the Organization complied, in all material respects, with the types of requirements referred to above that could have a direct and material effect on its major federal program for the year ended June 30, 2020.

To the Board of Directors of
MetroPlan Orlando

Report on Internal Control over Compliance

Management of the Organization is responsible for establishing and maintaining effective internal control over compliance with the types of compliance requirements referred to in the first paragraph. In planning and performing our audit of compliance, we considered the Organization's internal control over compliance with the types of requirements that could have a direct and material effect on its major federal program to determine the auditing procedures that are appropriate in the circumstances for the purpose of expressing an opinion on compliance for its major federal program and to test and report on internal control over compliance in accordance with the Uniform Guidance, but not for the purpose of expressing an opinion on the effectiveness of internal control over compliance. Accordingly, we do not express an opinion on the effectiveness of the Organization's internal control over compliance.

A deficiency in internal control over compliance exists when the design or operation of a control over compliance does not allow management or employees, in the normal course of performing their assigned functions, to prevent or detect and correct noncompliance with a type of compliance requirement of a federal program on a timely basis. *A material weakness in internal control over compliance* is a deficiency, or combination of deficiencies, in internal control over compliance, such that there is a reasonable possibility that material noncompliance with a type of compliance requirement of a federal program will not be prevented, or detected and corrected, on a timely basis. *A significant deficiency in internal control over compliance* is a deficiency, or combination of deficiencies, in internal control over compliance with a type of compliance requirement of a federal program that is less severe than a material weakness in internal control over compliance, yet important enough to merit attention by those charged with governance.

Our consideration of internal control over compliance was for the limited purpose described in the first paragraph of this section and was not designed to identify all deficiencies in internal control over compliance that might be material weaknesses or significant deficiencies. We did not identify any deficiencies in internal control over compliance that we consider to be material weaknesses. However, material weaknesses may exist that have not been identified.

The purpose of this report on internal control over compliance is solely to describe the scope of our testing of internal control over compliance and the results of that testing based on the requirements of the Uniform Guidance. Accordingly, this report is not suitable for any other purpose.

MSL, P.A.

Certified Public Accountants

Orlando, Florida
October 14, 2020

MetroPlan Orlando
A Regional Transportation Partnership

SCHEDULE OF EXPENDITURES OF FEDERAL AWARDS

For the Year Ended June 30, 2020

Federal or State Agency/ State Pass-Through Grantor/ Program Title	Catalog of Federal/State Domestic Assistance Number	Grant Identification Number	Total Program Expenditures
Federal Awards:			
Federal Highway Administration:			
Passed through the State of Florida			
Department of Transportation:			
Unified Planning Work Program			
PL-0087-056-M - FY 2020			
FM#439332-1-14-01			
	20.205	GOW38	\$ 1,769,873
SU Fund Projects			
FM#439332-1-14-02			
	20.205	GOW38	1,563,763
Multimodal Network Connectivity			
FM#439332-1-14-03			
	20.205	GOW38	<u>63,929</u>
Total CFDA 20.205			<u>3,397,565</u>
Federal Transit Administration:			
Passed through the State of Florida			
Department of Transportation:			
Unified Planning Work Program			
Section 5305(d) - 2017/2018 - X012-00			
	20.505	G0G13	40,319
Unified Planning Work Program			
Section 5305(d) - 2018/2019 - X013-00			
	20.505	G1575	291,475
Unified Planning Work Program			
Section 5305(d) - 2019/2020 - X014-00			
	20.505	G1F42	<u>369,778</u>
Total CFDA 20.505			<u>701,572</u>
Total Expenditures of Federal Awards:			<u><u>\$ 4,099,137</u></u>

Note to Schedule:

The accompanying Schedule is presented using the modified accrual basis of accounting. Under the modified accrual basis, revenue is recognized if it is measurable and available for use during the year. Expenditures are recognized in the period liabilities are incurred, if measurable. The amounts reported in the Schedule have been reconciled to and are in material agreement with amounts recorded in the Organization's accounting records from which the basic financial statements were prepared. The Organization did not elect to use the 10% de minimis indirect cost rate.

MetroPlan Orlando
A Regional Transportation Partnership

SCHEDULE OF FINDINGS AND QUESTIONED COSTS
For the Year Ended June 30, 2020

Section I - Summary of Auditor's Results

Financial Statement

Type of auditor's report issued on whether the financial statements audited were prepared in accordance with GAAP:

Unmodified

Internal control over financial reporting:

Material weakness(es) identified?

_____ Yes _____ X No

Significant deficiency(ies) identified?

_____ Yes _____ X None reported

Noncompliance material to financial statements noted?

_____ Yes _____ X No

Federal Awards

Internal control over major federal programs:

Material weakness(es) identified?

_____ Yes _____ X No

Significant deficiency(ies) identified?

_____ Yes _____ X None reported

Type of auditor's report issued on compliance for major federal programs:

Unmodified

Any audit findings disclosed that are required to be reported in accordance with 2 CFR 200.516(a)?

_____ Yes _____ X No

Identification of major federal programs:

CFDA Number
20.205

Name of Federal Program or Cluster
Unified Planning Work Program

Dollar threshold used to distinguish between

Type A and Type B programs

Federal \$750,000

Auditee qualified as low-risk auditee?

_____ X Yes _____ No

Section II - Financial Statement Findings

No matters were reported.

Section III - Federal Award Findings and Questioned Costs

No matters were reported.

OTHER SUPPLEMENTARY INFORMATION



metroplan orlando
A REGIONAL TRANSPORTATION PARTNERSHIP

MetroPlan Orlando
A Regional Transportation Partnership

SCHEDULE OF DETAILED REVENUES, EXPENDITURES AND CHANGES IN FUND BALANCE

GENERAL FUND

For the Year Ended June 30, 2020

Revenues:	
Charges for services	
Member assessments	\$ 1,207,829
Interest	52,478
Miscellaneous revenues	38,628
Total Revenues	<u>1,298,935</u>
Expenditures:	
Books, publications, subscriptions & memberships	17,778
Community relations & advertising	121,411
Computer operations	21
Consultants	64,828
Contractual services	3,217
Equipment & furniture	13,906
Equipment rent & repair	2,303
Fringe benefits	206,938
Indirect costs	120,572
Legal	29,827
Office supplies	8,713
Operating supplies	29,674
Other miscellaneous	1,847
Pass-through expenses	40
Postage	2,516
Printing & binding	23,301
Repair & maintenance	1,065
Salaries	466,552
Seminars/Training	8,095
Software	391
Travel & per diem	31,505
Total Expenditures	<u>1,154,500</u>
Excess of Revenues Over Expenditures	<u>144,435</u>
Other Financing Sources / (Uses):	
Transfers out	<u>(87,696)</u>
Total Other Financing Sources / (Uses)	<u>(87,696)</u>
Excess of Revenues Over Expenditures and Other Financing Sources / (Uses)	56,739
Fund Balance, beginning of year	<u>4,719,134</u>
Fund Balance, end of year	<u><u>\$ 4,775,873</u></u>

MetroPlan Orlando
A Regional Transportation Partnership

SCHEDULE OF DETAILED PROJECT REVENUES, EXPENDITURES,
AND CHANGES IN FUND BALANCE
SPECIAL REVENUE FUND
For the Year Ended June 30, 2020

	State Department of Transportation	Federal Transit Administration			Federal Highway Administration			Total Special Revenue Fund
	Transportation Disadvantaged	FL-08-X012-00	FL-08-X013-00	FL-08-X014-00	PL-0087-056-M FM#439332-1-14-01	SU Fund Projects FM#439332-1-14-02	Multimodal Network Connectivity FM#439332-1-14-03	
Revenues:								
Intergovernmental:								
Federal	\$ -	\$ 40,319	\$ 291,475	\$ 369,778	\$ 1,769,873	\$ 1,563,763	\$ 63,929	\$ 4,099,137
State	102,286	5,040	36,434	46,222	-	-	-	189,982
Total intergovernmental revenues:	102,286	45,359	327,909	416,000	1,769,873	1,563,763	63,929	4,289,119
Other grants:								
Total grant revenue:	102,286	45,359	327,909	416,000	1,769,873	1,563,763	63,929	4,289,119
Expenditures:								
Audit	-	-	13,000	-	13,000	-	-	26,000
Community relations & advertising	1,668	-	-	-	-	-	-	1,668
Consultants	-	9,808	35,192	48,145	789,860	1,384,360	63,929	2,331,294
Equipment Rental & Maintenance	1,560	-	-	-	-	-	-	1,560
Fringe benefits	5,578	26	25,801	79,503	198,274	36,784	-	345,966
Printing & binding	336	-	-	-	-	-	-	336
Indirect costs	4,363	20	20,180	62,183	155,079	28,771	-	270,596
Office supplies	103	-	-	-	-	-	-	103
Pass-through expenses	70,000	40,466	190,314	26,329	-	-	-	327,109
Postage	913	-	-	-	-	-	-	913
Salaries	17,265	79	79,856	246,062	613,660	113,848	-	1,070,770
Seminars/Training	500	-	-	-	-	-	-	500
Total expenditures	102,286	50,399	364,343	462,222	1,769,873	1,563,763	63,929	4,376,815
Excess / (Deficiency) of Revenues Over Expenditures								
	-	(5,040)	(36,434)	(46,222)	-	-	-	(87,696)
Other Financing Sources / (Uses):								
Transfers in	-	5,040	36,434	46,222	-	-	-	87,696
Total Other Financing Sources / (Uses)	-	5,040	36,434	46,222	-	-	-	87,696
Excess / (Deficiency) of Revenues and Other Financing Sources / (Uses) Over Expenditures								
	-	-	-	-	-	-	-	-
Fund Balance at beginning of year	-	-	-	-	-	-	-	-
Fund Balance at end of year	\$ -	\$ -	\$ -	\$ -	\$ -	\$ -	\$ -	\$ -



metroplan orlando
A REGIONAL TRANSPORTATION PARTNERSHIP

250 South Orange Avenue, Suite 200, Orlando, FL 32801
(407) 481-5672 | www.MetroPlanOrlando.org